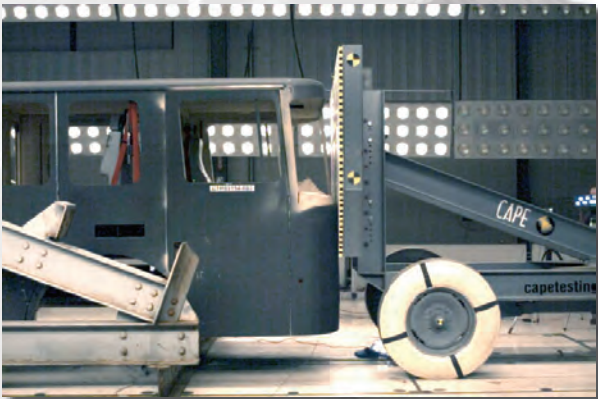
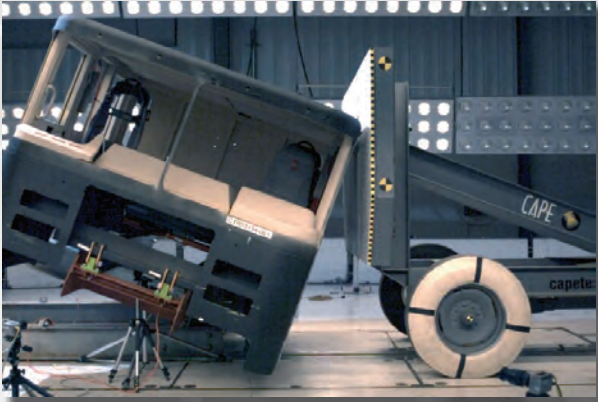
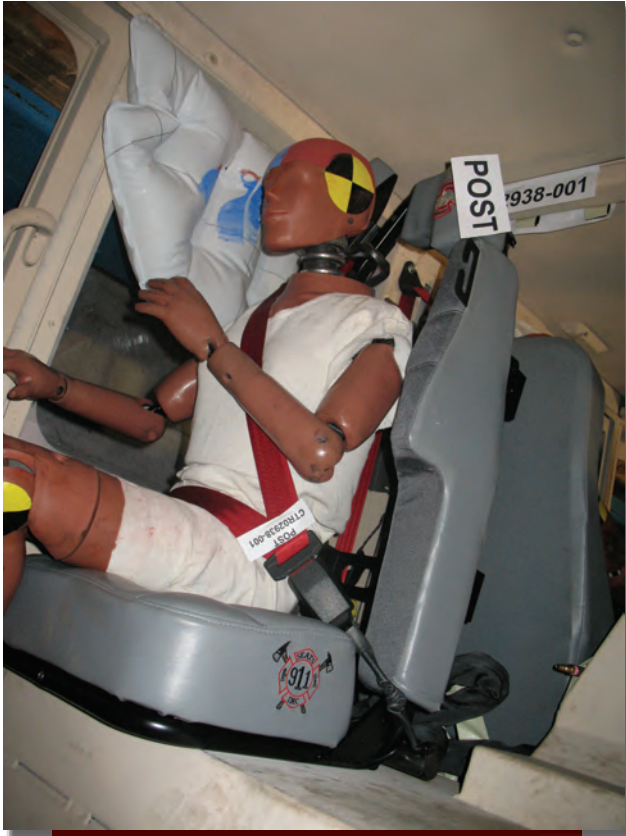


## At HME, firefighter safety is a concern.

The HME cab & chassis system is a complete package that is designed to keep occupants safe in the event of an accident.

- Fully crash tested and certified to meet the requirements of NFPA-1901 2009 edition for SAE J2422 Cab Roof Strength Evaluation, ECE R29 and SAE J2420 COE Frontal Strength Evaluation requirements.
- A safe and strong cab design that includes an extruded framework construction and 3/16" aluminum plate.
- RollTek rollover protection system for front and rear occupants.
  - Keep firefighters securely in their seats
  - Pull down suspension seats to increase survivable space in the cab
  - Cushion heads and necks of firefighters in outboard positions
- Seat Belt Monitoring System with an audible warning device and visual display designed to monitor that every occupant is belted prior to and during the response per NFPA-1901, section 4.1.3.10.
- Vehicle Stability Systems to assist with alerts and driver assists for prevention of rollovers per NFPA-1901, section 4.13.
- Vehicle Data Recorder for operator monitoring and incident reconstruction per NFPA 1901, section 4.11.





*RollTek greatly reduces the potential for death or serious injury to firefighters involved in a rollover.*

LifeGuard RollTek™, available from HME, Incorporated, manufacturer of custom fire chassis, combines side airbag protection with the latest advancements in seat belt technology.

In a rollover, RollTek deploys within a quarter second to position occupants securely in their seats, increase survivable space in the cab, and cushion head and neck impact, significantly reducing the potential for death or serious injury.

According to the U.S. Fire Administration, motor vehicle accidents are the second leading cause of death for on-duty firefighters, just behind heart attacks. Rollovers account for a significant number of these fatalities.

Over the course of designing and integrating RollTek into the HME custom chassis, LifeGuard Technologies engineers put the cab through a series of rigorous static and dynamic physical tests. Testing at the Center for Advanced Product Evaluation (CAPE) played an integral role in ensuring the system met all design requirements for advanced occupant protection.

HME reminds you to buckle up every time you get in the truck. Advanced safety systems in fire apparatus can only do their jobs if firefighters are belted.

6 1 6 . 5 3 4 . 1 4 6 3



[www.hmetruck.com](http://www.hmetruck.com)  
1950 Byron Center Avenue, Wyoming, Michigan 49519